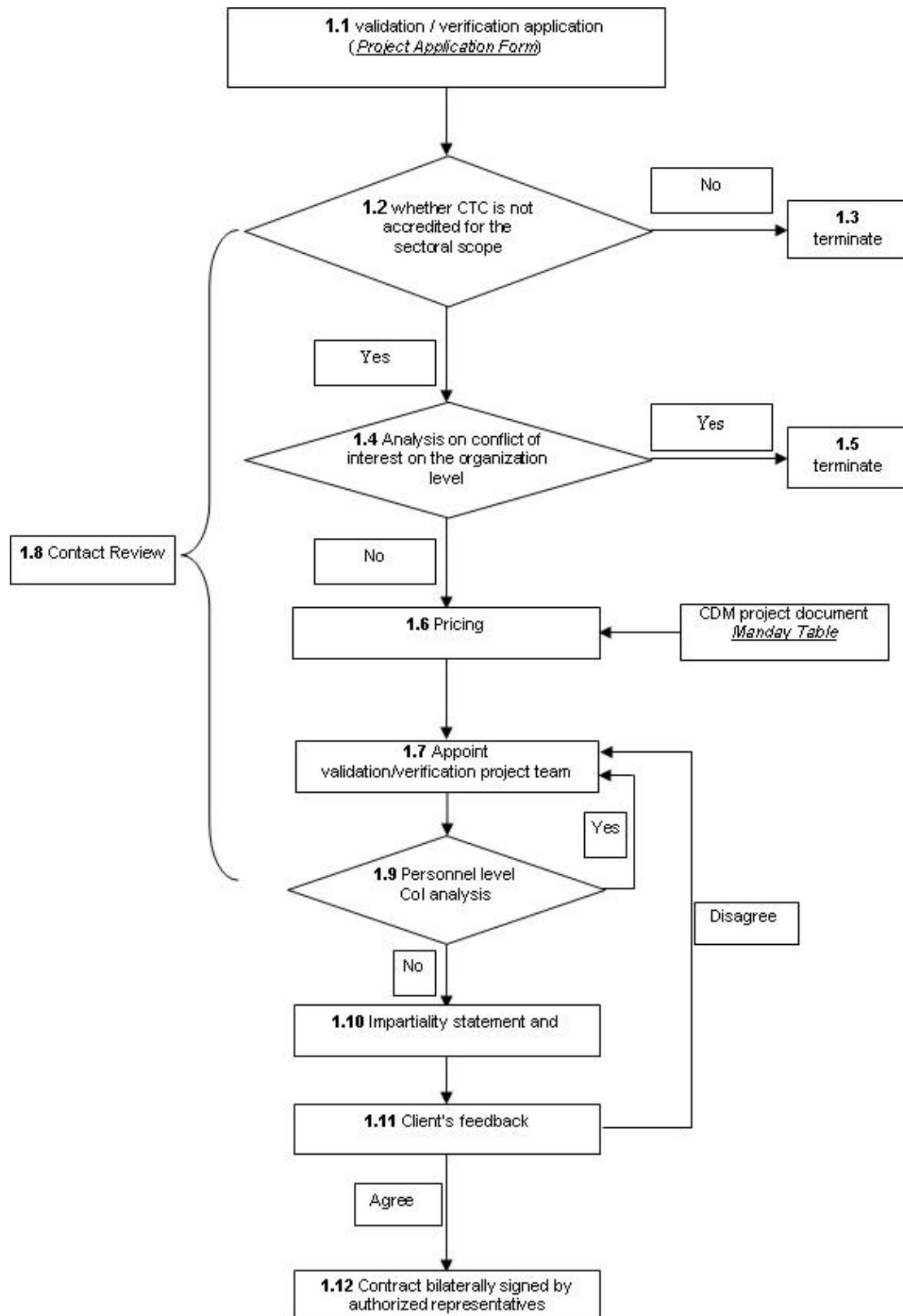
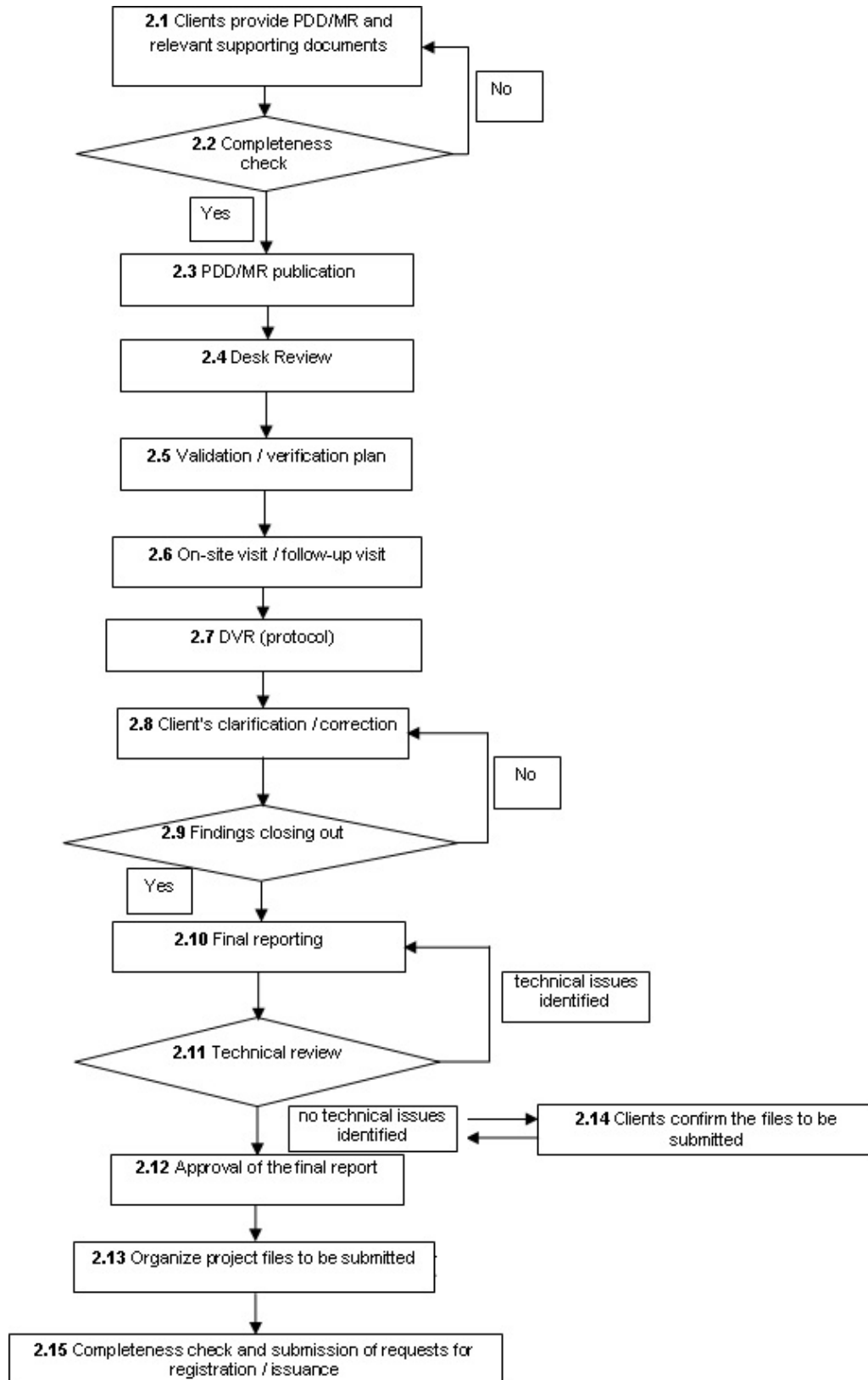


CTC CDM Validation and Verification Process

1 Flow Chart (1. Business Part)



2 Flow Chart (2. Production Part)



3. Production Part (supplement) Responses to requests from EB - Procedure

- When the CDM project submitted for registration or issuance received problems sent by UNFCCC secretariat in the periods of completeness check, information & reporting check or request for registration/issuance, initiate this flow;
- After receiving problems, OC-CCP shall promptly send e-mail to TL, TM-CCP, QM-CCP and AM-CCP, and initiate this flow;
- TL shall response to the problem;
- TM-CCP shall control the quality of response;
- QM-CCP shall follow up the handling process and final result, and set up the CTC Internal Know-how Lib;
- AM-CCP shall monitor the time limit for response submitting.

